

# **CLASS X/ BIOLOGY**

# **MALE REPRODUCTIVE SYSTEM**

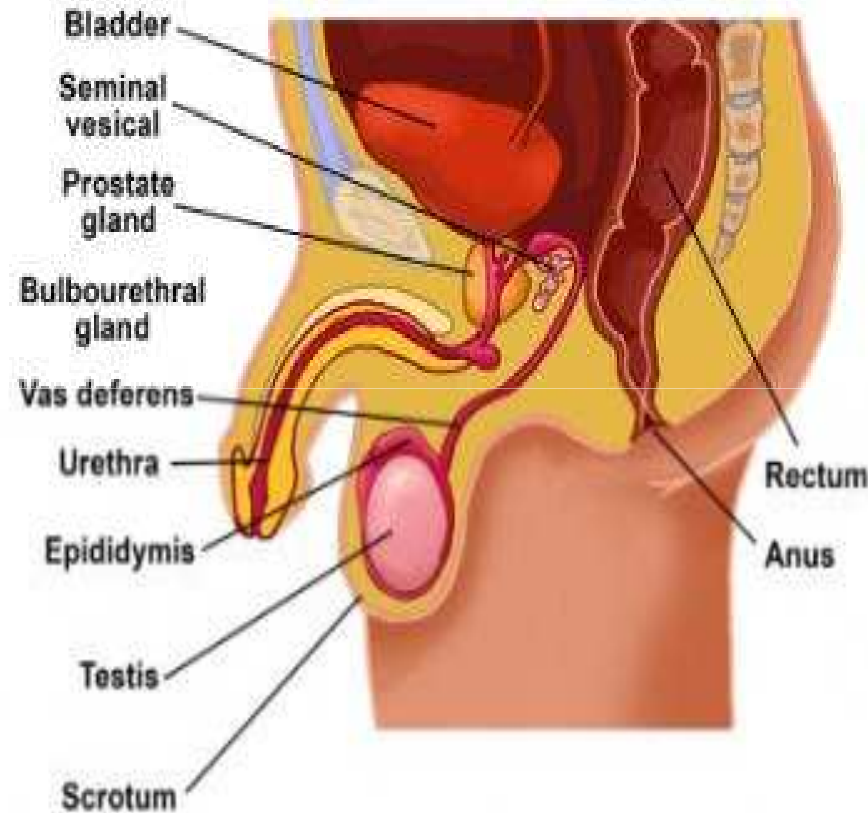
**Date : 14/08/2020**

**TEACHER :SASWATI BASAK**

# MALE REPRODUCTIVE SYSTEM OF HUMANS

Human male reproductive system consists following organ:

1. Testes
2. Scrotum
3. Vas Deferens
4. Urethra
5. Penis



# TESTES

Human male possesses two testes which lying outside the abdominal cavity. The two testes are the sites where male gametes i.e. sperm are produced. The testes also produce male sex hormone testosterone.

# SCROTUM

The scrotum is a pouch of skin that hangs between the legs it is divided internally into right and left scrotum sacs by a muscular partition. The two testes lie in respective scrotal sacs. The scrotum act as thermoregulator and provides an optimal temperature for the formation of sperm. The sperm develop at a temperature 1-3°C lower than the normal temperature. The life of sperm is greatly reduced if the temperature is higher. During winter, when temperature falls the scrotums shrinks to bring the testes close to body to get warmth. During summer, when temperature rises the scrotum become relaxed to lose heat.

## **VAS DEFERENS**

This is a straight tube about 40 cm long which carries the sperms to the seminal vesicles. Sperm are stored temporarily in the seminal vesicles where mucus and a watery alkaline fluid containing the sugar fructose mix with the sperms.

## URETHRA

It is about 20cm long tube that arises from the urinary bladder to carry urine. It runs through the penis and opens to the outside through male genital pore. The contains of two seminal vesicles sperms from vas deferens also join the urethra. Thus urethra carries urine from bladder as well as sperm from the vasa deferentia through the penis.

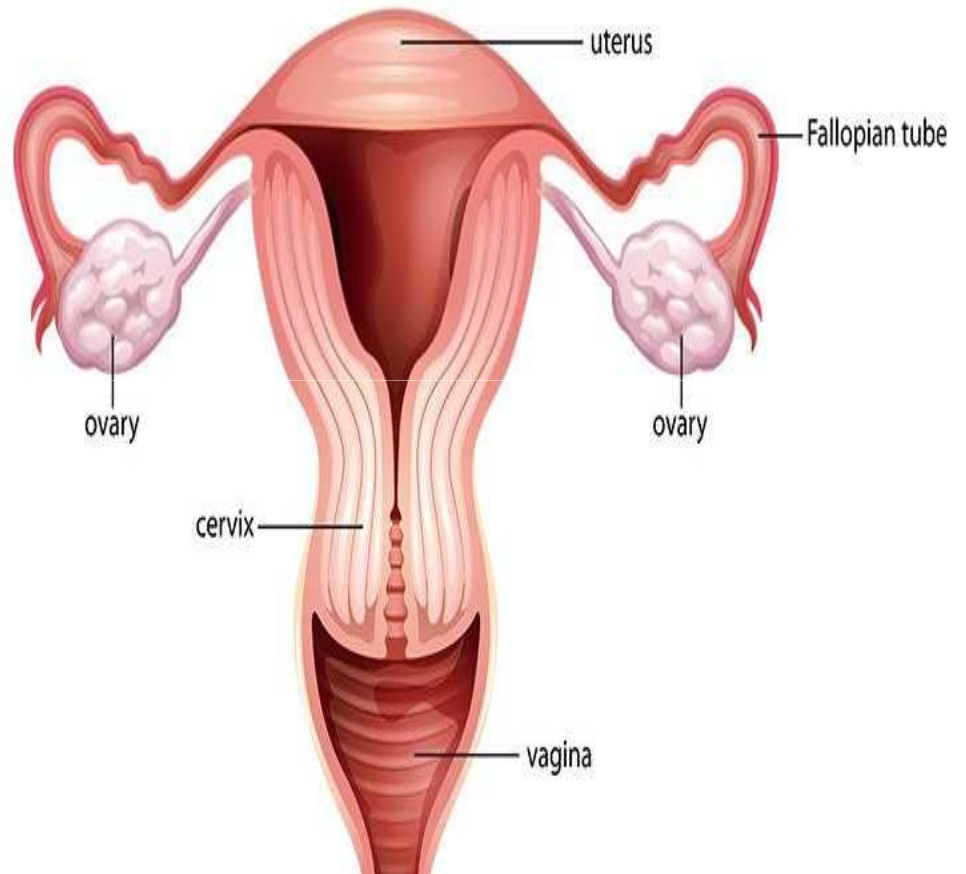
# PENIS

Penis is a long thick muscular organ made up of mostly erectile tissue. The tip of penis is a soft which is cover by a lose retractable fold of skin, called foreskin. At the time of sexual excitement, the erectile tissue get filled with blood causing the penis to become erect. It is inserted to the vagina of the female where sperm are ejaculated. In human males there is only one opening for the urine and sperms to pass out of body.

# FEMALE REPRODUCTIVE SYSTEM OF HUMANS

Human female reproductive system consists following organ:

1. Ovaries
2. Fallopian tubes (Oviducts)
3. Uterus
4. Vagina





# OVARIES

Each human female contain two almond shaped ovaries located in the lower part of the abdominal cavity near the kidney. Each ovary connected by the ligament to the uterus. The ovaries perform dual function –

- a) Production of female gametes (egg or ova)
- b) Secretion of female sex hormone (estrogen and progesterone)

Each ovaries is composed of ovarian follicles. Each follicles contains a large ovum surrounded by many layers of follicle cells. The production of ova starts at the age of puberty. Usually one ovum is produced every month during the fertile years of a woman. After menopause the ovary become small and lose follicle

## **FALLOPIAN TUBE (OVIDUCT)**

Fallopian tube is about 10-12cm long muscular tube which carries egg from the ovary to the uterus and also provides the appropriate environment for its fertilisation. The funnel-shaped opening end each fallopian tube lies near the posterior ends of each ovary. The other ends of long convoluted tubes open into the uterus.

# UTERUS

Uterus is a large inverted pear-shaped, muscular structure that lies behind the bladder. When fertilisation takes place the embryo gets attached to the wall of uterus and grows there until birth.

# VAGINA

This is a muscular tube 7-10 cm long whose wall contain elastic tissue. It is well adopted to receive the male penis during copulation. The vagina also called birth canal as it allows passage of the baby at the time of child birth. In human females the urinary opening and vaginal are separate.